



## TECHICAL DATA SHEET

### EliPex premium, insulated PEX pipes

#### General description

EliPex premium, flexible pipes for district heating. PEX pipes insulated with PUR material in corrugated casing pipe. Manufactured in continuous technology that ensures consistent insulations foam quality. The technology involves long service pipe units being insulated in a continuous process. EliPex Premium pre-insulated flexible pipes are produced from PEX-a, polyurethane foam (PUR) and polyethylene casing pipe (LDPE). Available in SDR 7,4 and SDR 11, single and double pipe coils in 20 mm to 125 mm. PEX-a pipe has significant advantages compared to other types of Pex pipes. In production it is guaranteed the cross binding is > 85%.

#### Standards

EliPex pipes are produced in accordance with European standards: EN 15632-1, EN 253 and EN 448 for pre-insulated flexible pipes.

#### Material

##### PEX service pipe properties

<b>MATERIAL</b>	PEX-a, DIN 16892
<b>DIMENSIONS AND WEIGHT</b>	DIN 16893
<b>HEAT RESISTANCE</b>	Max 95°C, see table 4.0.1.8 and 4.0.1.9
<b>OXYGEN BARRIER</b>	< 0,10 g/m <sup>3</sup> DIN 4726
<b>DENSITY</b>	944 kg/m <sup>3</sup>
<b>THERMAL CONDUCTIVITY</b>	0,38 W/m·K

##### PUR foam properties

<b>COMPRESSION STRENGTH</b>	> 0,15 MPa at 10% deflection acc. to Set standards
<b>THERMAL CONDUCTIVITY</b>	0,0195 W/m·K acc. to EN 253 chapter 4.5.6
<b>DENSITY</b>	55 - 65 kg/m <sup>3</sup> acc. to EN 253 chapter 4.4.4
<b>WATER ABSORPTION</b>	< 10% water absorption of sample mass acc. to EN 253 chapter 4.4.5

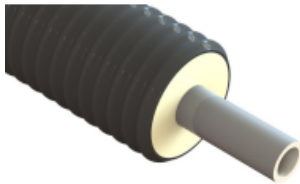
##### Casing pipe properties

<b>MATERIAL</b>	Linear Low Density Polyethylene - LDPE
<b>COLOUR</b>	Carbon black > 2,5% of the mass acc. to EN 15632-1 chapter 5.5.1
<b>MELT FLOW INDEX</b>	0,85 g/10 min. acc. to EN ISO 1133 (190°C / 2,16 kg)
<b>THERMAL CONDUCTIVITY</b>	0,40 W/m·K

## Dimensions

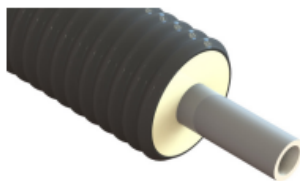
Below table shows atical number, outer dimensions of service pipe and outer dimensions of casing pipes.

### ELIPEX PREMIUM SDR7,4 - SINGLE INSULATION SERIES 1



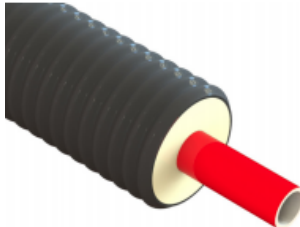
SDR 7,4 Product no.	Pex pipe			Casing pipe D <sub>Nominal</sub>	Weight [kg/m]
	d <sub>e</sub> [mm]	d <sub>i</sub> [mm]	t [mm]		
11.102.021	20	14,4	2,8	75	0,9
11.102.026	25	18,0	3,5	75	1,0
11.102.033	32	23,2	4,4	75	1,1
11.102.041	40	29,0	5,5	90	1,6
11.102.051	50	36,2	6,9	110	2,3
11.102.064	63	45,8	8,6	125	3,1

### ELIPEX PREMIUM SDR 7,4 - SINGLE INSULATION SERIES 2



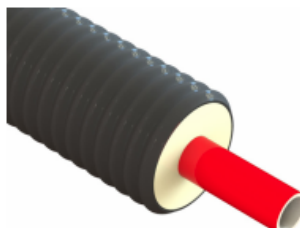
SDR 7,4 Product no.	Pex pipe			Casing pipe D <sub>Nominal</sub>	Weight [kg/m]
	d <sub>e</sub> [mm]	d <sub>i</sub> [mm]	t [mm]		
11.202.021	20	14,4	2,8	90	1,0
11.202.026	25	18,0	3,5	90	1,2
11.202.033	32	23,2	4,4	90	1,6
11.202.041	40	29,0	5,5	110	2,0
11.202.051	50	36,2	6,9	125	2,6
11.202.064	63	45,8	8,6	140	3,3

### ELIPEX PREMIUM SDR 11- SINGLE INSULATION SERIES 1



SDR 11 Product no.	Pex pipe			Casing pipe D <sub>Nominal</sub>	Weight [kg/m]
	d <sub>e</sub> [mm]	d <sub>i</sub> [mm]	t [mm]		
11.101.021	20	16,2	1,9	75	0,98
11.101.026	25	20,4	2,3	75	0,98
11.101.033	32	26,2	2,9	75	1,0
11.101.041	40	32,6	3,7	90	1,4
11.101.051	50	40,8	4,6	110	2,1
11.101.064	63	51,4	5,8	125	2,8
11.101.076	75	61,4	6,8	140	3,7
11.101.091	90	73,6	8,2	160	4,0
11.101.111	110	90	10,0	180	5,1

### ELIPEX PREMIUM SDR 11- SINGLE INSULATION SERIES 2



SDR 11 Product no.	Pex pipe			Casing pipe D <sub>Nominal</sub>	Weight [kg/m]
	d <sub>e</sub> [mm]	d <sub>i</sub> [mm]	t [mm]		
11.201.021	20	16,2	1,9	90	1,0
11.201.026	25	20,4	2,3	90	1,0
11.201.033	32	26,2	2,9	90	1,1
11.201.041	40	32,6	3,7	110	1,6
11.201.051	50	40,8	4,6	125	2,3
11.201.064	63	51,4	5,8	140	3,0
11.201.076	75	61,4	6,8	160	4,3
11.201.091	90	73,6	8,2	180	4,6
11.201.111	110	90	10,0	200	5,4



## Coil dimentions

EliPex Premium pipes are delivered in coils to fit in both DC and HC containers. The EliPex pipe length can be customized by the request of the customers and Set Pipes can also provide longer coils. For special requests please contact our technical department.

**TABLE 3.1.6**

EliPex Premium coil dimensions for 40 feet DC container, 11 coils in each container

CASING PIPE $D_{Nominal}$	INNER DIAMETER [mm]	OUTER DIAMETER [mm]	WIDTH [mm]	LENGTH [m]
75	1450 ± 30	2250 ± 50	1000 ± 50	554
90	1600 ± 30	2250 ± 50	1000 ± 50	253
110	1600 ± 30	2250 ± 50	1000 ± 50	155
125	1800 ± 30	2250 ± 50	1000 ± 50	95
140	2000 ± 30	2250 ± 50	1120 ± 50	56
160	2000 ± 30	2250 ± 50	1120 ± 50	45
180	1900 ± 30	2250 ± 50	1120 ± 50	39
200				

**TABLE 3.1.7**

EliPex Premium coil dimensions for 40 feet HC container, 8 coils in each container + one DC coil

CASING PIPE $D_{Nominal}$	INNER DIAMETER [mm]	OUTER DIAMETER [mm]	WIDTH [mm]	LENGTH [m]
75	1450 ± 30	2530 ± 50	1000 ± 50	530
90	1580 ± 30	2530 ± 50	1000 ± 50	407
110	1580 ± 30	2530 ± 50	1000 ± 50	280
125	1580 ± 30	2530 ± 50	1000 ± 50	180
140	1700 ± 30	2530 ± 50	1000 ± 50	122
160	1900 ± 30	2530 ± 50	1120 ± 50	83
180	1800 ± 30	2530 ± 50	1120 ± 50	74
200	1750 ± 30	2530 ± 50	1120 ± 50	60